

### NOTES

- PLEASE CHECK FOR WIND FLOW CALCULATIONS, SITE & PROJECT SPECIFIC CALCULATIONS CAN BE PROVIDED ON REQUEST AT AN ADDITIONAL FEE.

MANAGED STATIONS MANUAL: NRL/3/OCS/044 - R-11

Kwik-Kwik Ultraspun offers unlimited scope to contractors who need to fit low-cost, large-scale temporary hoardings. The lining that panels are easy to fit to a sturdy sub-structure and there is no limit to the height or the overall surface area that can be covered by these panels. Standard 10mm panels are available in 3m or 5m heights and can be fitted horizontally or vertically to create an attractive customer facing facade. Each panel has a standard width of 0.5m. Corners can be shipped to maximise the usable store space and to accommodate immovable fittings.

This cost-effective system creates an immaculate finish. Available in a vast range of colours, Kwik-Kwik Ultraspun can even provide a high value permanent store fitting solution. The smooth finish allows the promotional vinyls to be attached which is ideal in a retail environment.

Please call if you require technical details.

**FLEXIBLE MODULAR SYSTEM** - any height, any length, any width, any corner, ultimate angles and flexibility.

**EASY TO INSTALL** - the modular system makes fitting easy.

**ATTRACTIVE** - preserves and enhances the store and managed areas within the station, ROBUST - high impact resistance, virtually indestructible, no light to handle.

**FOOD SAFE** - depends smooth surfaces, LIGHTWEIGHT - easy to handle, easy to handle, easy to install.

**COLOR OPTIONS** - we can blend in and match your existing color scheme.

**RELIABLE SERVICE** - we respond quickly and professionally to your needs.

**QUALITY MATERIALS** - including Class 0 recycled PVC.



CLEANING STRATEGY FOR Q&A MANUALS SEE CSQA/DATA SHEET: NBS Ref: QAO/030

**Kwik-Kwik**  
ultraspun extra  
FLOOR TO CEILING SEALED SYSTEM

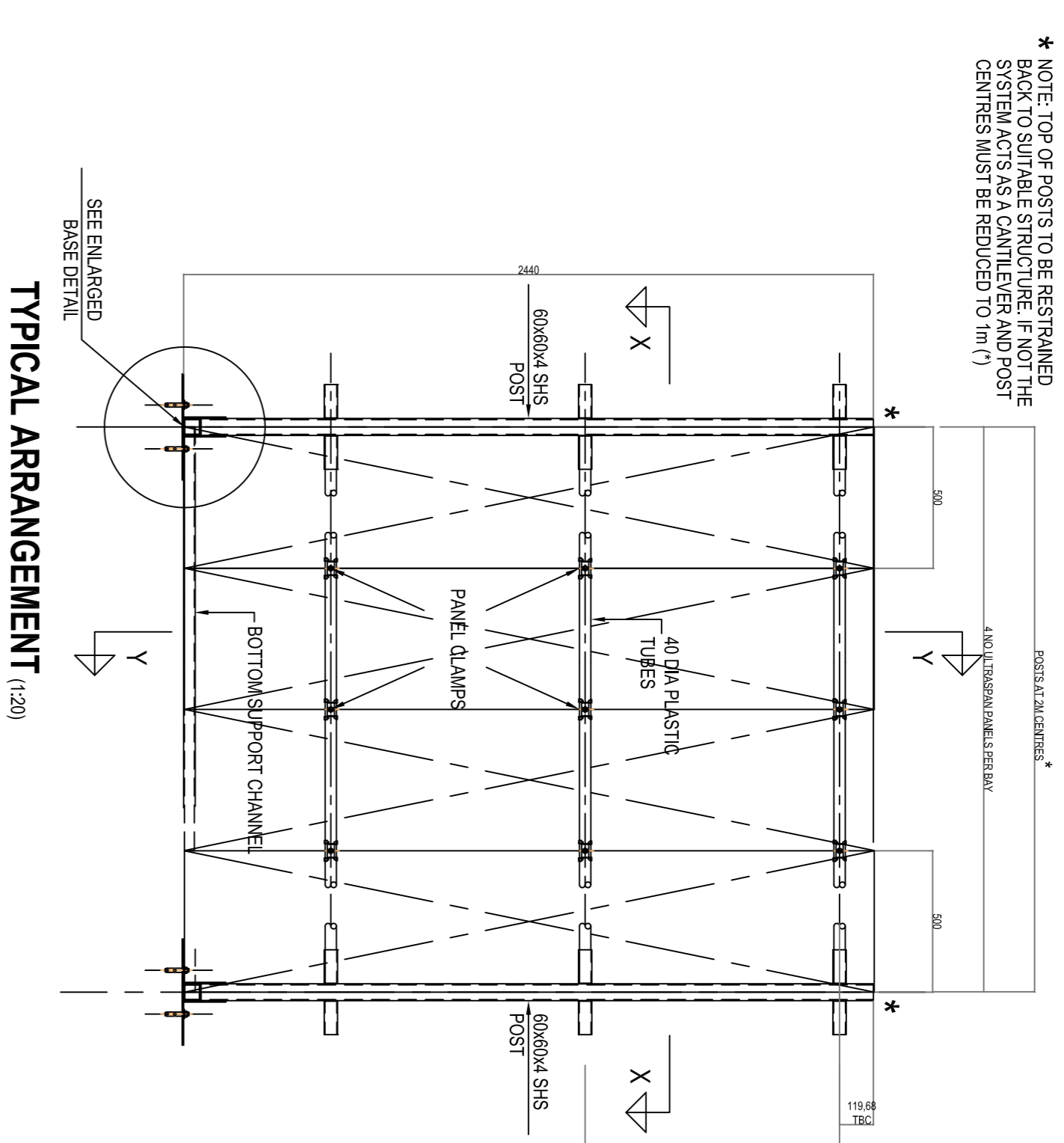
© Copyright 2011 Kwik-Kwik  
Hoardings Ltd  
Kwik-Kwik Hoardings Ltd, Unit 3a, A1  
Business Park, 370 Bedford Road,  
Bighouse, West Yorkshire, HD5 4DU  
www.kwik-kwik.co.uk  
www.ecogreenk.co.uk

Tel: 0845 058 4999  
Fax: 01484 719 754  
Email: info@kwik-kwik.co.uk

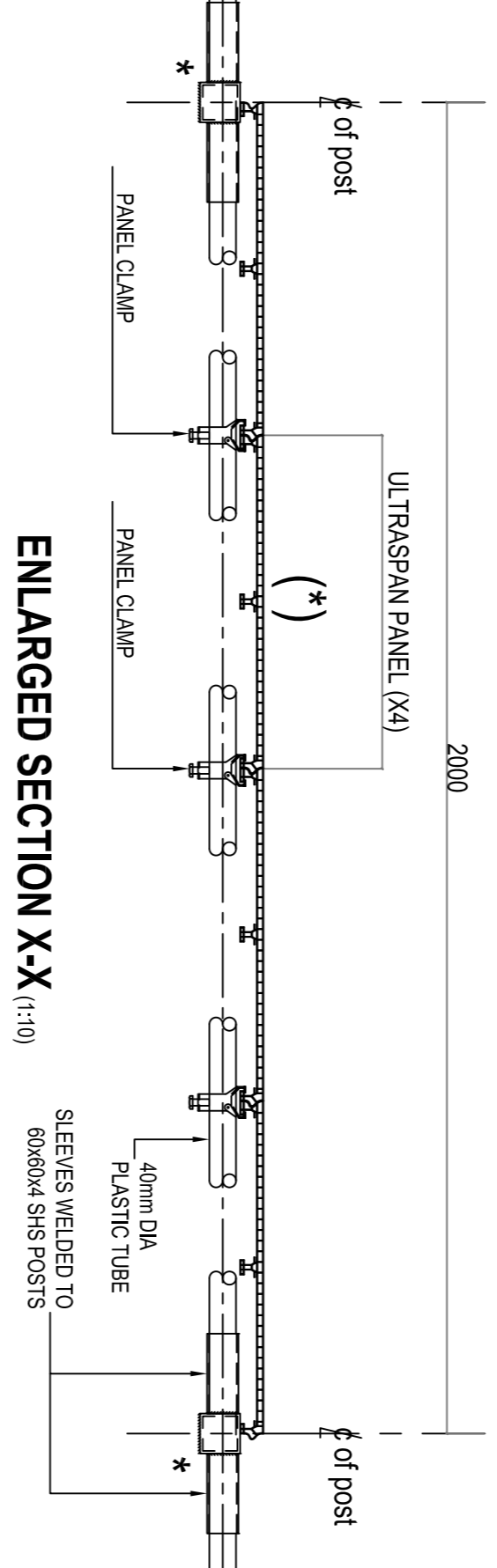
Product Range  
**MANAGED STATIONS MANUAL**  
NRL/3/OCS/044 - R-11

Drawing Title  
**FREE STANDING FEET DETAILS**

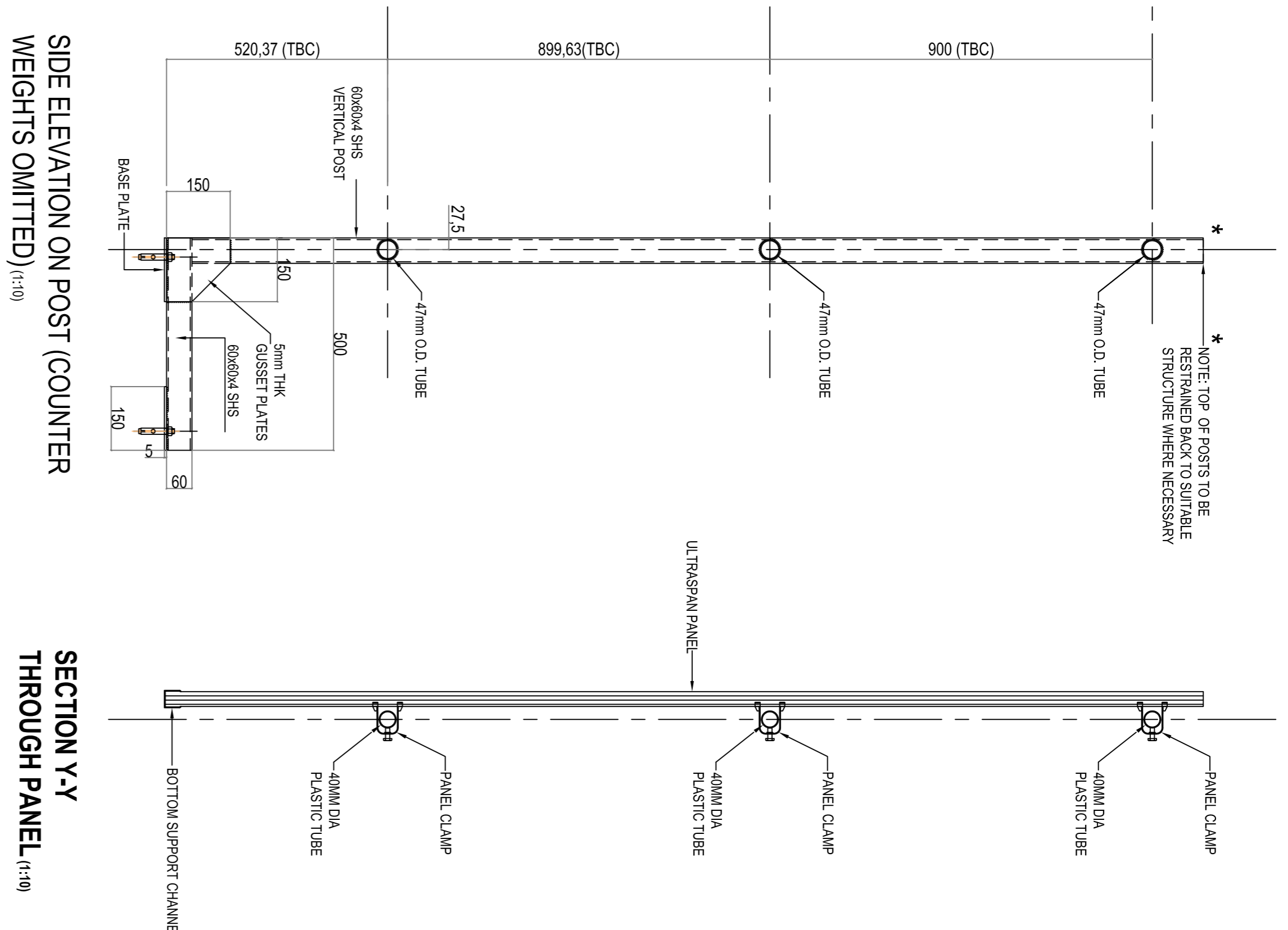
Drawing No.	Revision				
KKHS0100					
Drawing Scale	Size	Drawn by	Date	Chkd	Parapl
AS SHOWN	A1	NS	July 2011	T	-



TYPICAL ARRANGEMENT (1:20)

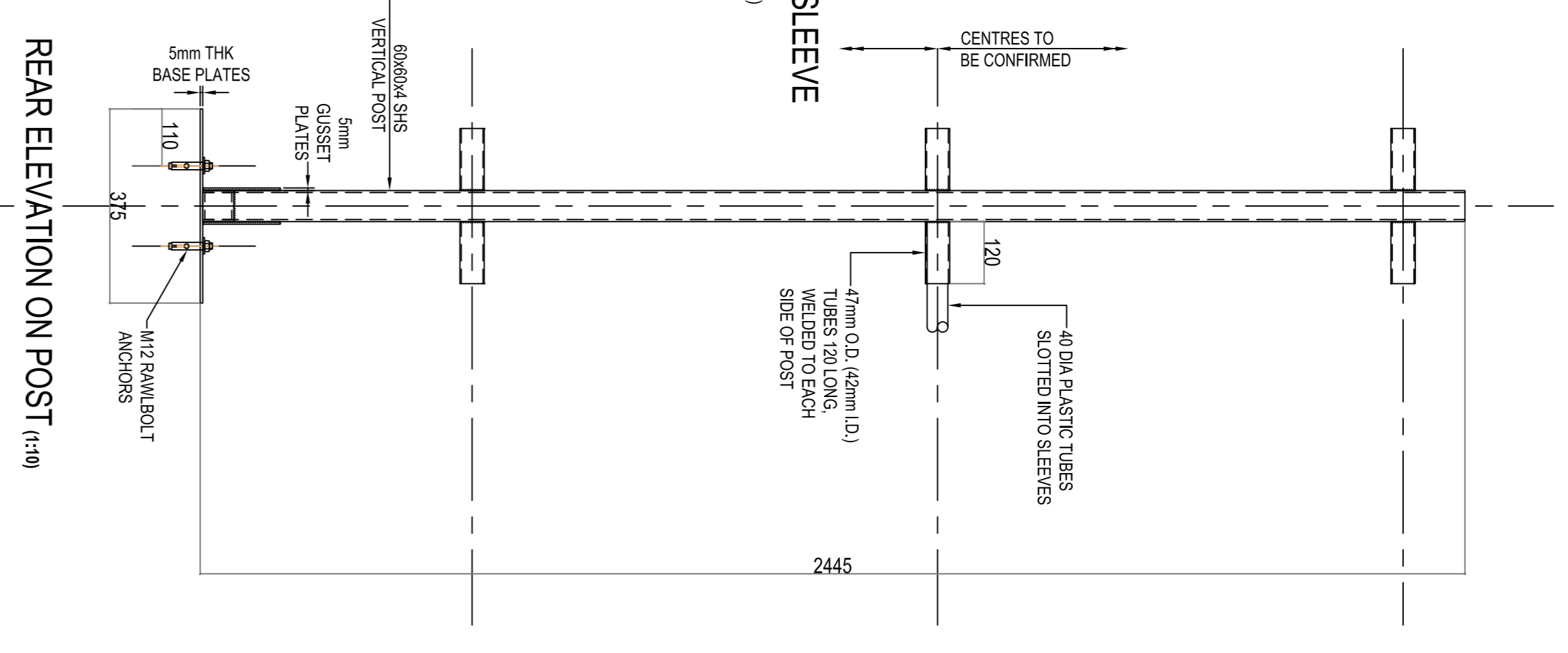


ENLARGED SECTION X-X (1:10)

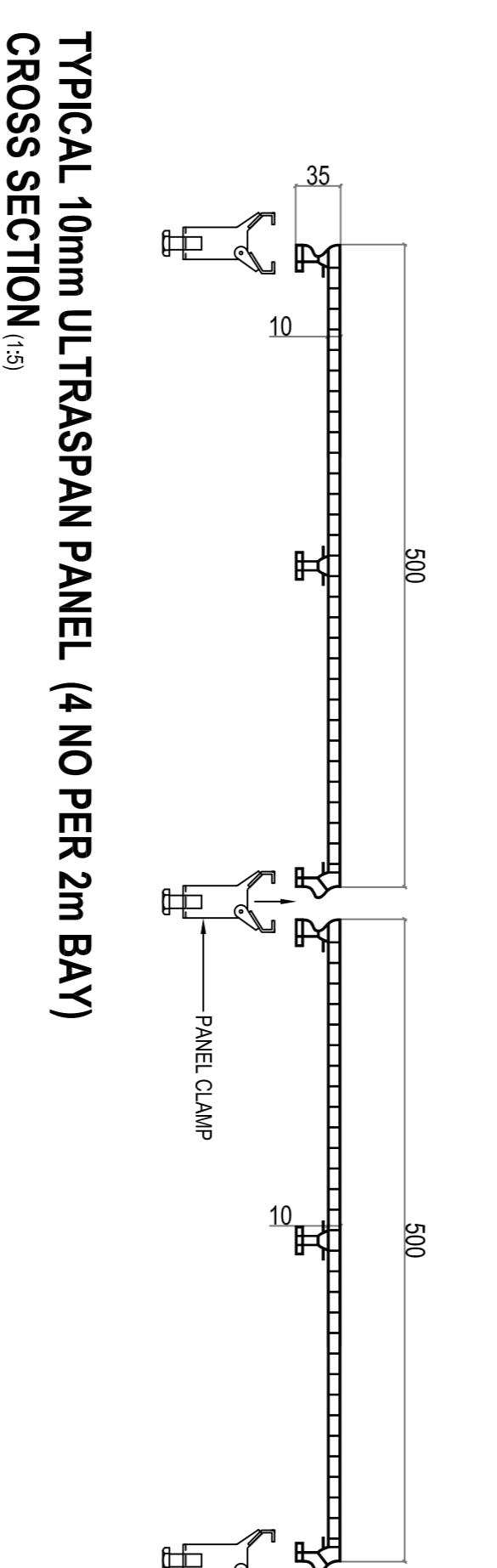


SIDE ELEVATION ON POST (COUNTER WEIGHTS OMITTED) (1:10)

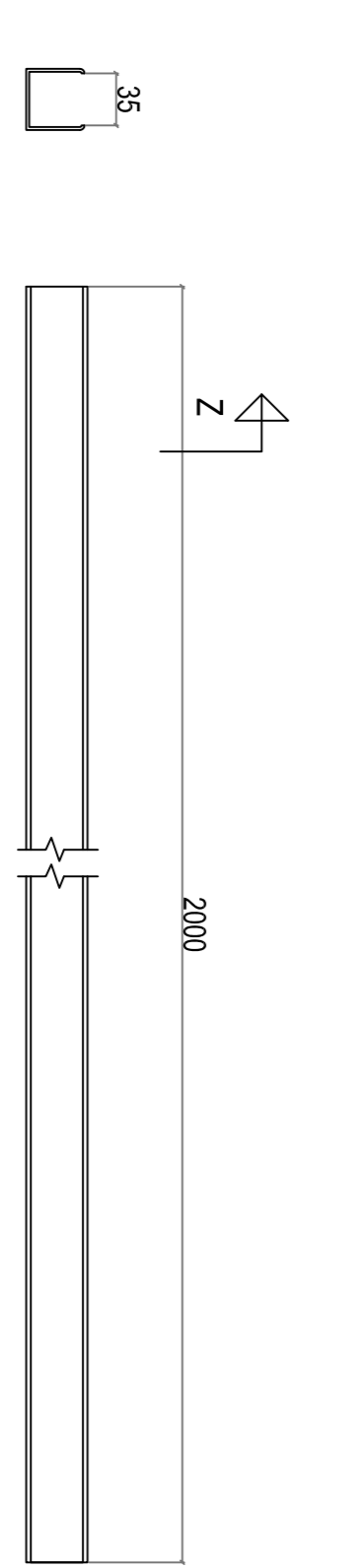
SECTION Y-Y THROUGH PANEL (1:10)



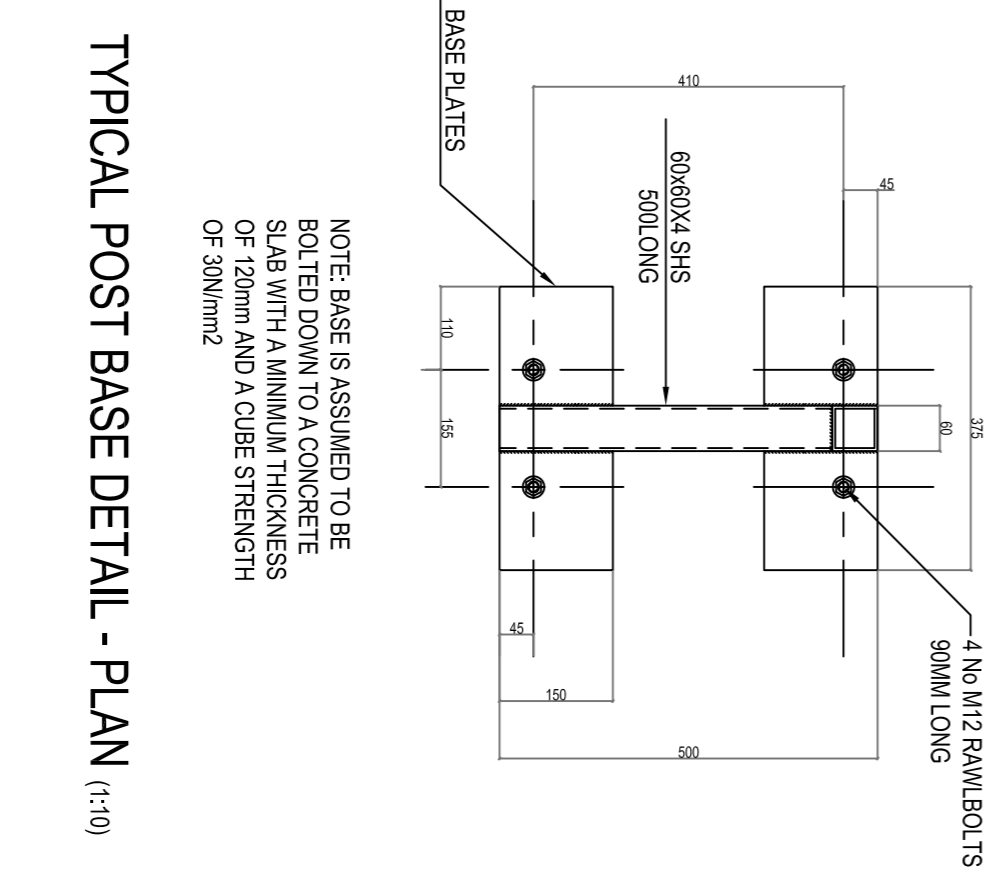
REAR ELEVATION ON POST (1:10)



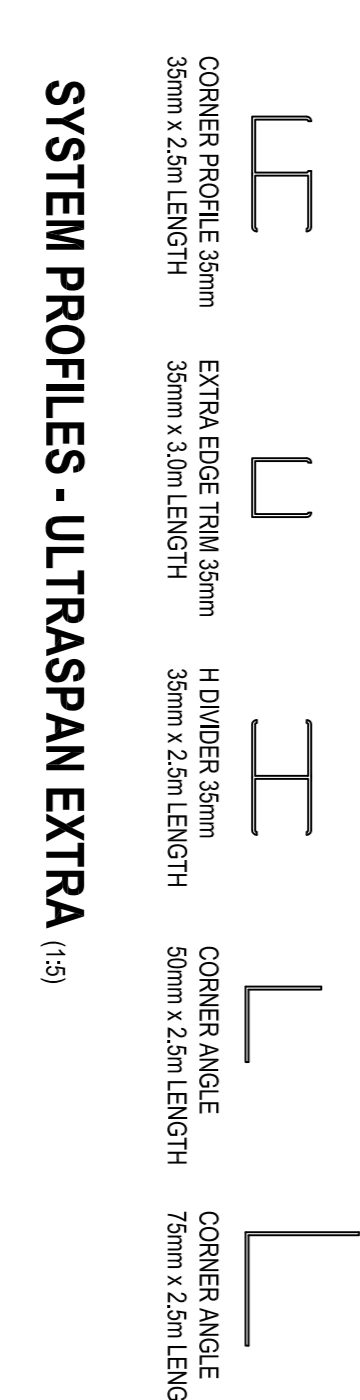
TYPICAL 10mm ULTRASPAN PANEL (4 NO PER 2m BAY) CROSS SECTION (1:5)



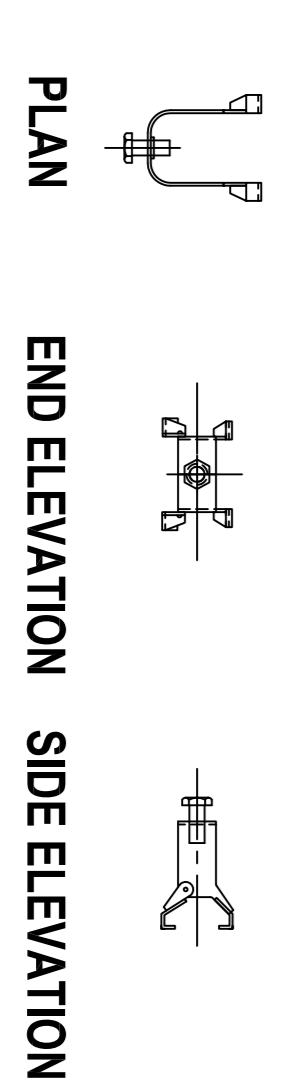
BOTTOM SUPPORT CHANNEL - PLAN (1:5)



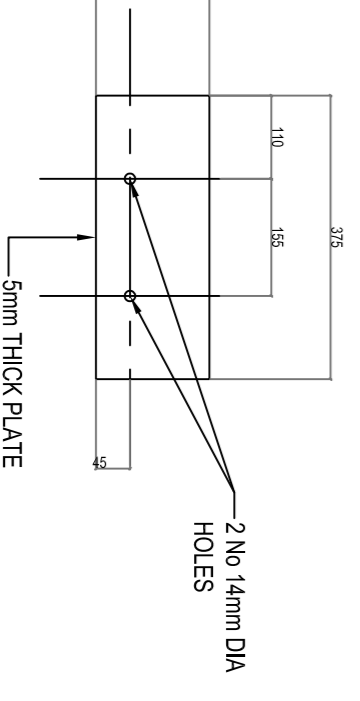
TYPICAL POST BASE DETAIL - PLAN (1:10)



SYSTEM PROFILES - ULTRASPAN EXTRA (1:5)

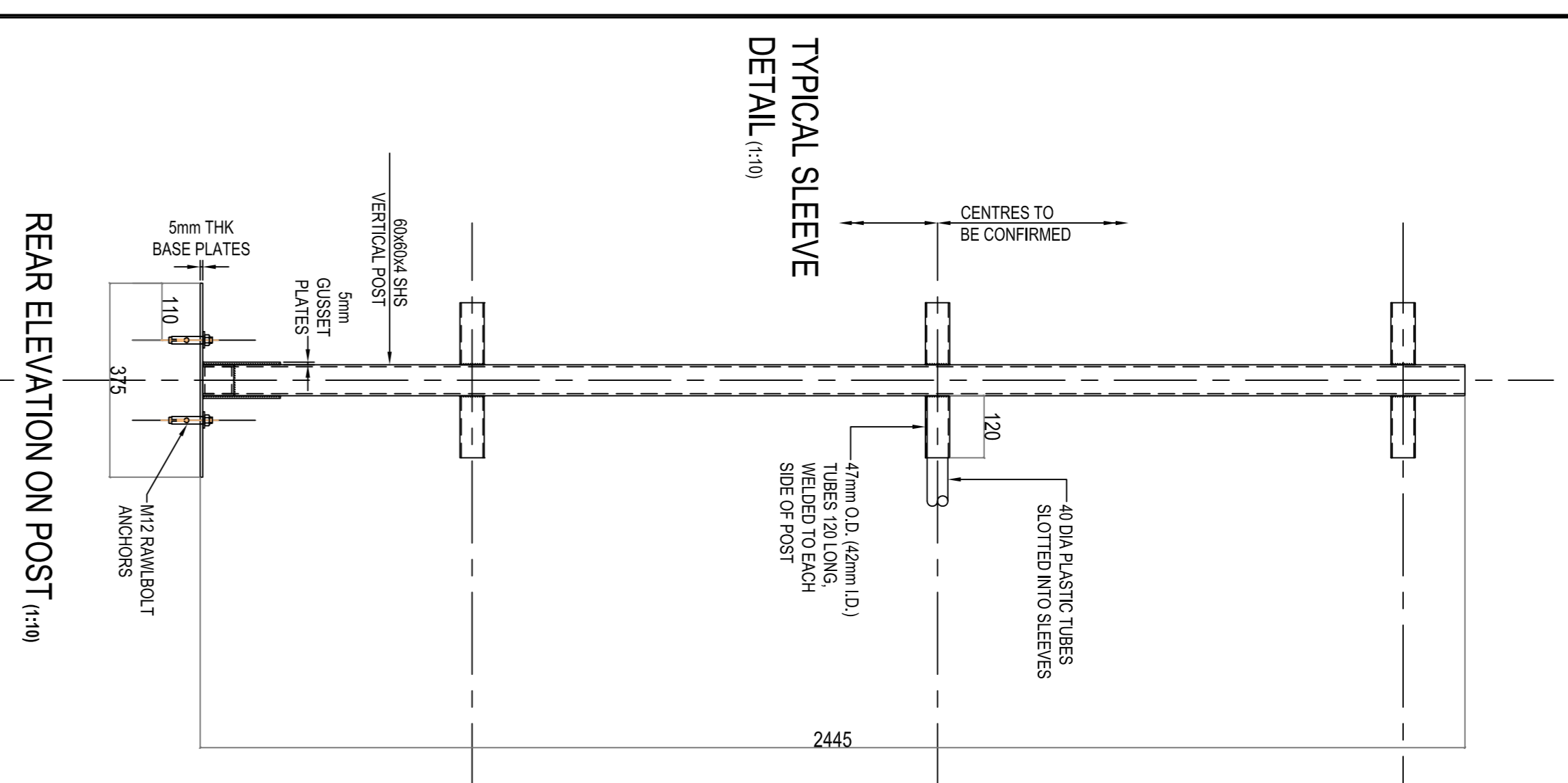


PANEL CLAMPS (1:5)



BASEPLATE DETAILS (2 NO PER POST) (1:10)

TYPICAL SLEEVE DETAIL (1:10)



NOTE: BASE IS ASSUMED TO BE BOLTED DOWN TO A CONCRETE SLAB WITH A MINIMUM THICKNESS OF 120mm AND A CUBE STRENGTH OF 30N/mm<sup>2</sup>

\* NOTE: TOP OF POSTS TO BE RESTRAINED BACK TO SUITABLE STRUCTURE IF NOT THE SYSTEM ACTS AS A CANTILEVER AND POST CENTRES MUST BE REDUCED TO 1m (\*)

\* NOTE: TOP OF POSTS TO BE RESTRAINED BACK TO SUITABLE STRUCTURE WHERE NECESSARY

SEE ENLARGED BASE DETAIL